

56+77² = 1st track to point of frog
 56+83² = met
 56+88² = East rail
 57+29⁴ = met
 57+35⁶ = East rail " " See track
 58+53³ = West rail
 58+60² = East rail " " Passing track
 58+74⁴ = met rail
 58+81³ = East rail Southern Pac main line (front on rail)
 60+00 =
 65+00 =
 70+00 = Hub
 76+85² = met
 76+89² = East rail U+M

of the Mt near S.T.R.S.

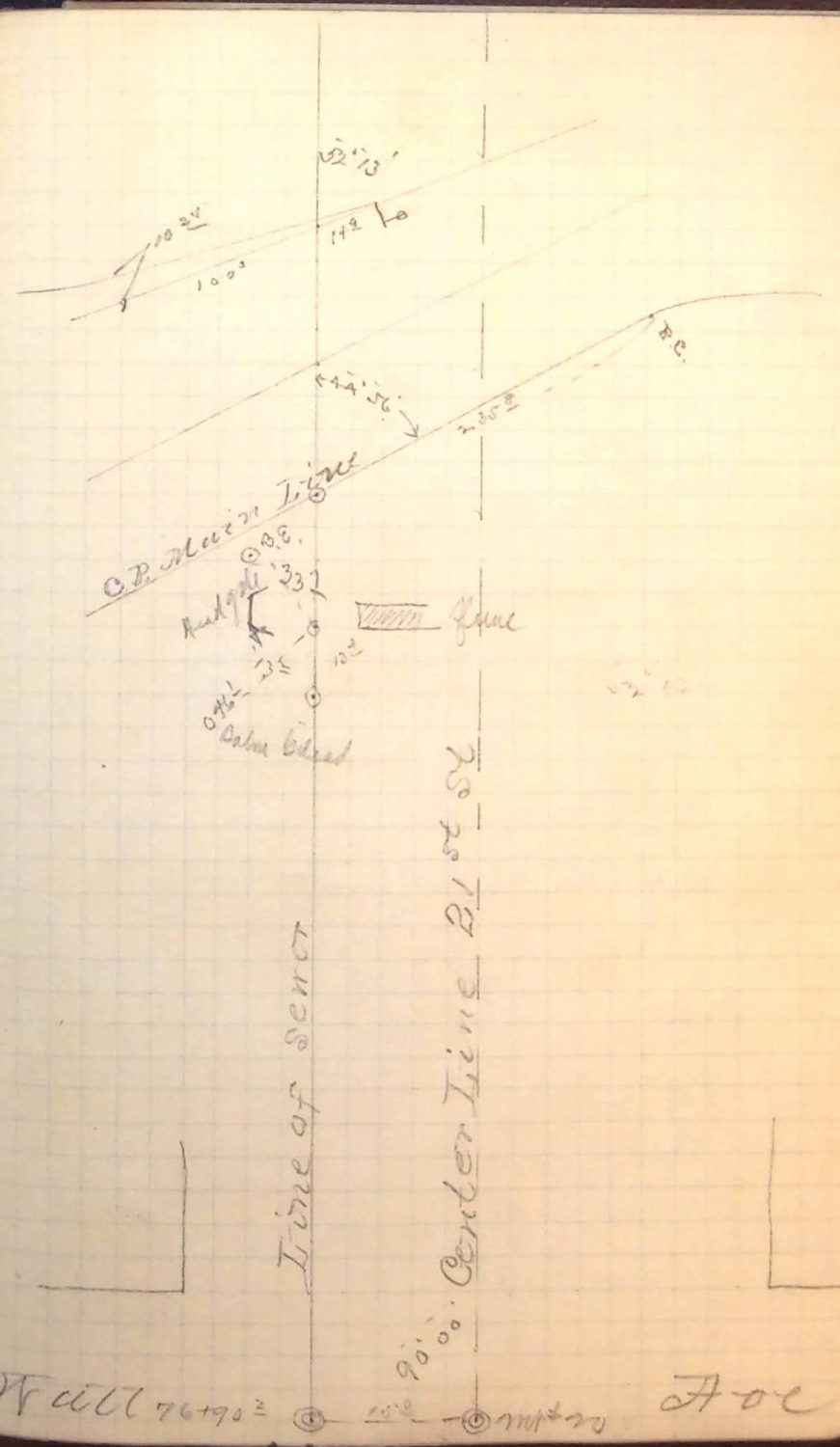
Three custom letter Hub S.S. on Hub 15th south
 90'00 East South + set Hub 182 ft for line down

S.S. on Hub 0th south of mt. See line near 400.
 76+90² = Mt # 20 Wall # 21st st = Just

Wabes River.

Sewer. 21st St wall am to
 Stationary line for Main "outlet"

Wednesday Aug June 20th 1890



Wall 76+90² 182 ft 1890